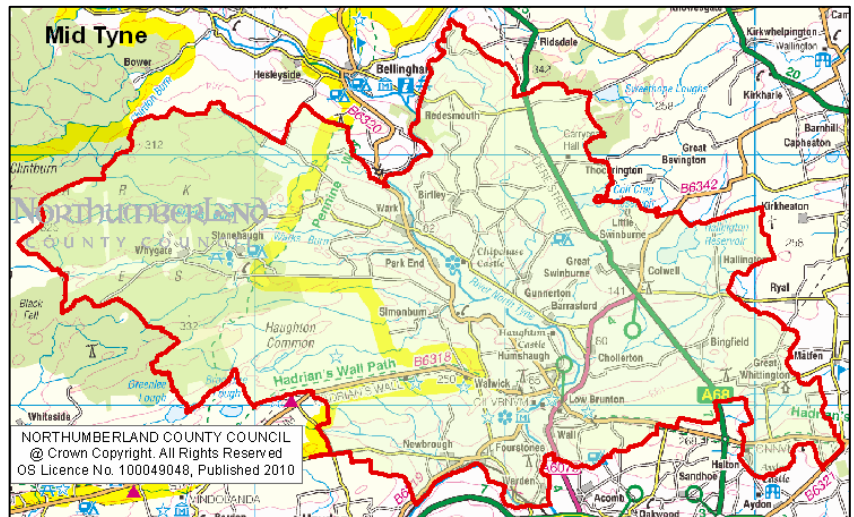


Mid Tyne locality lies in the West Service Area of Northumberland and has a population of 4,572. It measures 332 km² in terms of area, and has a population density of 14 people per km². Mid Tyne locality includes Humshaugh, Wark and part of Northumberland National Park.

This data is a snapshot of Mid Tyne. For detailed statistics, the most up to date information and sheets explaining how each indicator has been calculated see the InfoNorthumberland Interactive Area Profiles: www.northumberlandinfonet.org.uk/area_profiles/. To access this profile in another format please contact the InfoNet using the details at the bottom of the page.



Key Issues for Mid Tyne Locality

People & Place

- 16.0% of the population are aged 0-15 years, (West Northumberland 17.4%, Northumberland 17.4%).
- Between 2005–2007 the number of people in this age group fell by 8.2% the second largest decrease of all 27 localities (West Northumberland fell by 1.9%, Northumberland fell by 2.1%).

Community Involvement & Cohesion

- 21.3% of people would like to be more involved in decisions that affect their local area (West Northumberland 24.0%, Northumberland 23.5%).

Economic Well-being

- 21.1% of people aged 16 to 74 in employment work mainly at or from home (West Northumberland 14.8%, Northumberland 10.8%).
- 26.4% of people aged 16 to 74 who are economically active are self employed (West Northumberland 18.9%, Northumberland 12.5%).
- The largest percentage of people aged 16-74 are employed in retail (13.0%), health (12.9%), agriculture hunting & forestry (12.4%) and real estate (12.0%), Northumberland rates 15.4%, 13.7%, 3.5% and 9.4% respectively.

Housing

- 69.4% of private dwellings are classified as non decent (West Northumberland 48.8%, Northumberland 40.9%), and 20.8% are in a state of disrepair (West Northumberland 13.0%, Northumberland 10.4%).
- 34.6% of private households are in fuel poverty (spend more than 10% of income on fuel) – West Northumberland 23.5%, Northumberland 20.2%.
- 26.9% of private households are classified as vulnerable (in receipt of at least one of the principal means tested or disability related benefits) – West Northumberland 20.5%, Northumberland 24.3%.
- 17.3% of private households are classified as vulnerable and non decent (West Northumberland 11.2%, Northumberland 10.4%).
- 9.1% of all households are without central heating (West Northumberland 5.0%, Northumberland 3.4%).
- 18.6% of dwellings fall into council tax 'Band A' (West Northumberland 25.4%, Northumberland 48.1%).
- The majority of all household spaces (42.2%) are detached (West Northumberland 38.5%, Northumberland 24.6%).
- 21.5% of all households are rented by a Private landlord or letting agency (West Northumberland 9.3%, Northumberland 7.3%).

Transport & Services

- 43.8% of people are satisfied with their local bus services and 39.5% are satisfied with local transport information provided (Northumberland 45.4% and 41.3%).

Environment

- 48.1% of people are satisfied with doorstep recycling services and 56.5% believe that their local public services are working to make the area cleaner and greener (Northumberland 64.8% and 66.4% respectively).

Mid Tyne Locality Profile

	Locality	West	N/land		Locality	West	N/land
Population¹				Economically Active	2,439	35,758	145,205
All People	4,572	74,652	310,619	71.6%	66.7%	64.6%	
Males	2,295	36,517	152,109	Economically Inactive	968	17,821	79,474
Females	2,277	38,135	158,510	28.4%	33.3%	35.4%	
0 to 15 Years	731	12,981	54,085	Employment by Industry:			
16.0%	17.4%	17.4%	Agriculture; hunting; forestry	293	1,920	4,778	
Working Age (16-64 Males, 16-59 Females)	2,864	43,928	187,083	12.4%	5.6%	3.5%	
62.6%	58.8%	60.2%	Fishing	3	8	201	
All People 65+ Males/60+ Females	977	17,743	69,451	0.1%	0.0%	0.1%	
21.4%	23.8%	22.4%	Mining & quarrying	37	216	1,154	
Area (km²)	332	2,468	5,078	1.6%	0.6%	0.8%	
Population Density (pop/km²)	14	30	61	202	3,684	19,711	
				Manufacturing	8.6%	10.8%	14.5%
				Electricity; gas and water	16	285	1,260
				0.7%	0.8%	0.9%	
				120	2,198	9,860	
				Construction	5.1%	6.4%	7.2%
				307	5,030	20,889	
				13.0%	14.7%	15.4%	
				Wholesale & retail trade	141	1,907	7,270
				14	1,907	7,270	
				Hotels and catering	6.0%	5.6%	5.3%
				132	1,911	7,699	
				5.6%	5.6%	5.7%	
				Transport storage and comms.	68	997	3,812
				2.9%	2.9%	2.8%	
				Financial intermediation	284	3,893	12,754
				12.0%	11.4%	9.4%	
				Real estate	135	2,231	11,373
				5.7%	6.1%	8.4%	
				Public admin. and defence	198	3,408	10,517
				8.4%	9.9%	7.7%	
				Education	304	4,851	18,686
				12.9%	14.2%	13.7%	
				Health and social work	2,357	34,265	136,083
				2.357	34,265	136,083	
				All people (16-74) in employment			
Community Cohesion²				Housing⁶			
% of people agreeing people from different backgrounds get on well together	84.3%	87.4%	80.5%	Average House Price (£)	£277,664	£263,129	£179,852
% of people who feel strongly they belong to their immediate neighbourhood	85.2%	73.3%	68.5%	Households With Residents	1,913	30,619	130,780
% of people who believe they can influence decisions affecting their local area	32.4%	28.4%	28.1%	94.6%	95.5%	94.7%	
% of people over the last 12 months who have given unpaid help at least once a month	27.5	29.8%	24.9%	29	411	2,389	
				Second Residence / Holiday Accommodation	1.4%	1.3%	1.7%
				80	1,039	4,895	
				Vacant Households	4.0%	3.2%	3.5%
				854	12,358	33,940	
				Detached, Whole House or Bungalow	42.2%	38.5%	24.6%
				595	9,783	49,496	
				Semi-detached, Whole House or Bungalow	29.4%	30.5%	35.9%
				493	7,287	39,943	
				Terraced (including end terrace), Whole House or Bungalow	24.4%	22.7%	28.9%
				81	2,578	14,489	
				Flat, Maisonette or Apartment	4.0%	8.0%	10.5%
				0	79	196	
				Caravan or other mobile or temporary structure	0.0%	0.2%	0.1%
				2,022	32,069	138,064	
				All Household Spaces			
				People satisfied with their home as a place to live	95.7%	93.3%	90.2%
Community Safety³				Education⁷			
% who feel people not treating each other with respect and consideration is a big problem	4.8%	15.3%	26.8%	Pupils gaining 5 or more GCSE's grades A* to C	82.1%	77.6%	68.8%
Anti Social Behaviour (rate per 1,000 pop)	51.5	50.0	78.6	Pupils gaining 5 or more GCSE's grades A* to G	96.4%	95.8%	93.3%
Teenagers hanging around on the streets is a big problem	11.1%	24.7%	37.9%	People with No Qualifications	834	13,167	70,263
People using / dealing drugs is a big problem	6.6%	18.8%	28.9%	24.5%	24.6%	31.3%	
People drunk / rowdy in public spaces is a big problem	4.1%	14.9%	24.6%	All Students in Higher Education	200	3,159	9,402
% people who feel very or fairly safe outside after dark	94.2%	80.0%	64.1%	Males:	37.5%	41.6%	39.2%
				Females:	62.0%	58.4%	60.8%
Health⁴				Economic Well-Being⁵			
People who think their general health is good / very good	87.0%	79.0%	73.0%	IMD Employment Domain - % Pop. Employment Deprived	248	5,889	38,429
% satisfied with their GP	86.1%	88.8%	86.1%	5.5%	7.9%	12.4%	
% satisfied with their local hospital	73.5%	74.8%	75.6%	369	6,280	43,172	
% satisfied with their local dentist	71.4%	74.1%	72.4%	8.1%	8.5%	14.0%	
				79	1,225	10,313	
				IMD IDACI - Children 0-15 in Income Deprived households	9.9%	9.3%	18.7%
				135	2,282	12,626	
				IMD IDAOPI - % pop. 60+ Income Deprived	12.9%	11.8%	16.6%
				43	962	7,708	
				Unemployment Statistics (April 2009)	1.5%	2.2%	4.1%
				36,767	£37,226	n/a	

1) Population – Population figures are taken from the Mid-Year population estimates 2007.

2) Community Cohesion – data is taken from the Place Survey 2008. For full definitions and data see www.northumberlandinfonet.org.uk/stronger_communities/consultation/

3) Community Safety – anti-social behaviour calculated by the InfoNet. For more information on our work on crime and community safety contact myra.jamieson@northumberland.gov.uk

All other data taken from the Place Survey 2008.

4) Health – Data from the Place Survey 2008

5) Economic Wellbeing – Sources: IMD2007, Unemployment (Claimant Count)- rate is % of resident working age population (NOMIS), CACI Paycheck 2009 & Census 2001 (Econ Activity & Ind. of Employment)

6) Housing – Sources: House Price - Land Registry 2008, Census 2001 & Place Survey 2008 (Satisfaction with home).

7) Education – Sources: GCSE, Education, NCC, Census 2001 (No Quals.) & HESA 2009 (HE).