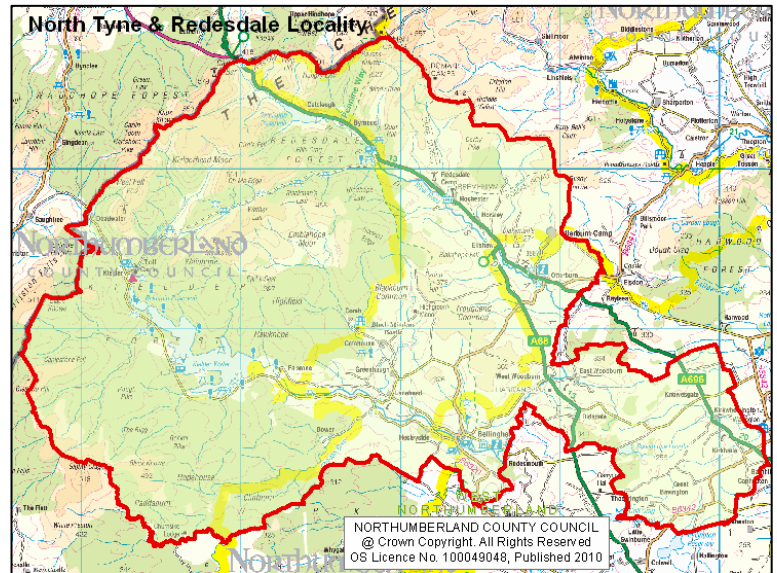


North Tyne & Redesdale locality lies in the West Service Area of Northumberland and has a population of 4,043. It measures 868 km² in terms of area (the largest of all 27 localities), and has a population density of 5 people per km². North Tyne & Redesdale locality includes part of Northumberland National Park, Keilder Water and Bellingham and Otterburn.

This data is a snapshot of North Tyne & Redesdale. For detailed statistics, the most up to date information and sheets explaining how each indicator has been calculated see the InfoNorthumberland Interactive Area Profiles: www.northumberlandinfonet.org.uk/area_profiles/. To access this profile in another format please contact the InfoNet using the details at the bottom of the page.



Key Issues for North Tyne & Redesdale Locality

People & Place

- 16.4% of the population are aged 0-15 years, (West Northumberland 17.4%, Northumberland 17.4%).
- Between 2005–2007 the number in this age group fell by 3.4% (Northumberland fell by 2.1%).
- The population density is 5 people per km² the lowest of all 27 localities (West Northumberland 30, Northumberland 61).

Community Involvement & Cohesion

- 24.1% of people believe they can influence decisions affecting their local area (West Northumberland 28.4%, Northumberland 28.1%).
- 23.9% of people are satisfied with the way in which their complaint(s) to the council was handled, the lowest of all 27 localities (West Northumberland 39.1%, Northumberland 38.8%).

Economic Well-being

- 24.6% of people aged 16 to 74 in employment work mainly at or from home the highest of all 27 localities (West Northumberland 14.8%, Northumberland 10.8%).
- 70.5% of people aged 16 to 74 are economically active (West Northumberland 66.7%, Northumberland 64.6%).
- 26.1% of people aged 16 to 74 who are economically active are self employed (West Northumberland 18.9%, Northumberland 12.5%).
- The largest percentage of people aged 16-74 (15.5%) are employed in agriculture, hunting and forestry (West Northumberland 5.6%, Northumberland 3.5%).

Housing

- 72.2% of private dwellings are classified as non decent (West Northumberland 48.8%, Northumberland 40.9%), and 16.0% are in a state of disrepair (West Northumberland 13.0%, Northumberland 10.4%).
- 32.6% of private households are in fuel poverty (spend more than 10% of income on fuel) – West Northumberland 23.5%, Northumberland 20.2%.
- 29.0% of private households are classified as vulnerable (in receipt of at least one of the principal means tested or disability related benefits) – West Northumberland 20.5%, Northumberland 24.3%.
- 18.4% of private households are classified as vulnerable and non decent (West Northumberland 11.2%, Northumberland 10.4%).
- The majority of all household spaces (41.8%) are detached (West Northumberland 38.5%, Northumberland 24.6%).

Transport & Services

- 20.4% are satisfied with their local bus services and 24.5% are satisfied with local transport information provided (Northumberland 45.4% and 41.3%).

Health & Social Well-being

- 62.9% of people are satisfied with their local hospital (West Northumberland 74.8%, Northumberland 75.6%).

North Tyne & Redesdale Locality Profile

	Locality	West	N/land		Locality	West	N/land
Population¹				Economically Active	1,999	35,758	145,205
All People	4,043	74,652	310,619	70.5%	66.7%	64.6%	
Males	2,003	36,517	152,109	Economically Inactive	838	17,821	79,474
Females	2,040	38,135	158,510	29.5	33.3%	35.4%	
0 to 15 Years	662	12,981	54,085	Employment by Industry:			
16.4%	17.4%	17.4%	Agriculture; hunting; forestry	296	1,920	4,778	
Working Age (16-64 Males, 16-59 Females)	2,414	43,928	187,083	15.5%	5.6%	3.5%	
59.7%	58.8%	60.2%	Fishing	4	8	201	
All People 65+ Males/60+ Females	967	17,743	69,451	0.2%	0.0%	0.1%	
23.9%	23.8%	22.4%	Mining & quarrying	15	216	1,154	
Area (km²)	868	2,468	5,078	0.8%	0.6%	0.8%	
Population Density (pop/km²)	5	30	61	105	3,684	19,711	
Community Cohesion²				Manufacturing	5.5%	10.8%	14.5%
% of people agreeing people from different backgrounds get on well together	84.0%	87.4%	80.5%	Electricity; gas and water	27	285	1,260
% of people who feel strongly they belong to their immediate neighbourhood	73.4%	73.3%	68.5%	1.4%	0.8%	0.9%	
% of people who believe they can influence decisions affecting their local area	24.1%	28.4%	28.1%	151	2,198	9,860	
% of people over the last 12 months who have given unpaid help at least once a month	41.7%	29.8%	24.9%	Construction	7.9%	6.4%	7.2%
Community Safety³				Wholesale & retail trade	202	5,030	20,889
% who feel people not treating each other with respect and consideration is a big problem	6.5%	15.3%	26.8%	10.6%	14.7%	15.4%	
Anti Social Behaviour (rate per 1,000 pop)	56.7	50.0	78.6	Hotels and catering	174	1,907	7,270
Teenagers hanging around on the streets is a big problem	16.1%	24.7%	37.9%	9.1%	5.6%	5.3%	
People using / dealing drugs is a big problem	11.5%	18.8%	28.9%	Transport storage and comms.	105	1,911	7,699
People drunk / rowdy in public spaces is a big problem	4.9%	14.9%	24.6%	5.5%	5.6%	5.7%	
% people who feel very or fairly safe outside after dark	89.6%	80.0%	64.1%	Financial intermediation	23	997	3,812
Health⁴				1.2%	2.9%	2.8%	
People who think their general health is good / very good	80.3%	79.0%	73.0%	Real estate	179	3,893	12,754
% satisfied with their GP	94.5%	88.8%	86.1%	9.4%	11.4%	9.4%	
% satisfied with their local hospital	62.9%	74.8%	75.6%	Public admin. and defence	167	2,231	11,373
% satisfied with their local dentist	71.8%	74.1%	72.4%	8.7%	6.1%	8.4%	
Economic Well-Being⁵				Education	138	3,408	10,517
IMD Employment Domain - % Pop. Employment Deprived	266	5,889	38,429	7.2%	9.9%	7.7%	
6.7%	7.9%	12.4%	Housing⁶				
IMD Income Domain - % Pop. Income Deprived	353	6,280	43,172	Average House Price (£)	£195,636	£263,129	£179,852
8.8%	8.5%	14.0%	Households With Residents	1,640	30,619	130,780	
IMD IDACI - Children 0-15 in Income Deprived households	72	1,225	10,313	90.4%	95.5%	94.7%	
10.5%	9.3%	18.7%	Second Residence / Holiday Accommodation	102	411	2,389	
IMD IDAOPI - % pop. 60+ Income Deprived	129	2,282	12,626	5.6%	1.3%	1.7%	
12.0%	11.8%	16.6%	Vacant Households	72	1,039	4,895	
Unemployment Statistics (April 2009)	60	962	7,708	4.0%	3.2%	3.5%	
2.5%	2.2%	4.1%	Detached, Whole House or Bungalow	759	12,358	33,940	
CACI Paycheck - Mean Household Income (2009)	£32,494	£37,226	n/a	41.8%	38.5%	24.6%	
				Semi-detached, Whole House or Bungalow	468	9,783	49,496
				25.8%	30.5%	35.9%	
				Terraced (including end terrace), Whole House or Bungalow	516	7,287	39,943
				28.4%	22.7%	28.9%	
				Flat, Maisonette or Apartment	69	2,578	14,489
				3.8	8.0%	10.5%	
				Caravan or other mobile or temporary structure	3	79	196
				0.2%	0.2%	0.1%	
				All Household Spaces	1,814	32,069	138,064
				People satisfied with their home as a place to live	96.8%	93.3%	90.2%
				Education⁷			
				Pupils gaining 5 or more GCSE's grades A* to C	68.6%	77.6%	68.8%
				Pupils gaining 5 or more GCSE's grades A* to G	92.2%	95.8%	93.3%
				People with No Qualifications	822	13,167	70,263
				29.0%	24.6%	31.3%	
				All Students in Higher Education	121	3,159	9,402
				Males:	35.5%	41.6%	39.2%
				Females:	64.5%	58.4%	60.8%

1) Population – Population figures are taken from the Mid-Year population estimates 2007.

2) Area - km² - calculated by the InfoNet

3) Community Cohesion – data is taken from the Place Survey 2008. For full definitions and data see www.northumberlandinfonet.org.uk/stronger_communities/consultation/

4) Health – Data from the Place Survey 2008

5) Economic Wellbeing – Sources: IMD2007, Unemployment (Claimant Count)- rate is % of resident working age population (NOMIS), CACI Paycheck 2009 & Census 2001(Econ Activity & Ind. of Employment)

6) Housing – Sources: House Price - Land Registry 2008, Census 2001 & Place Survey 2008 (Satisfaction with home).

7) Education – Sources: GCSE, Education, NCC, Census 2001 (No Quals.) & HESA 2009 (HE).